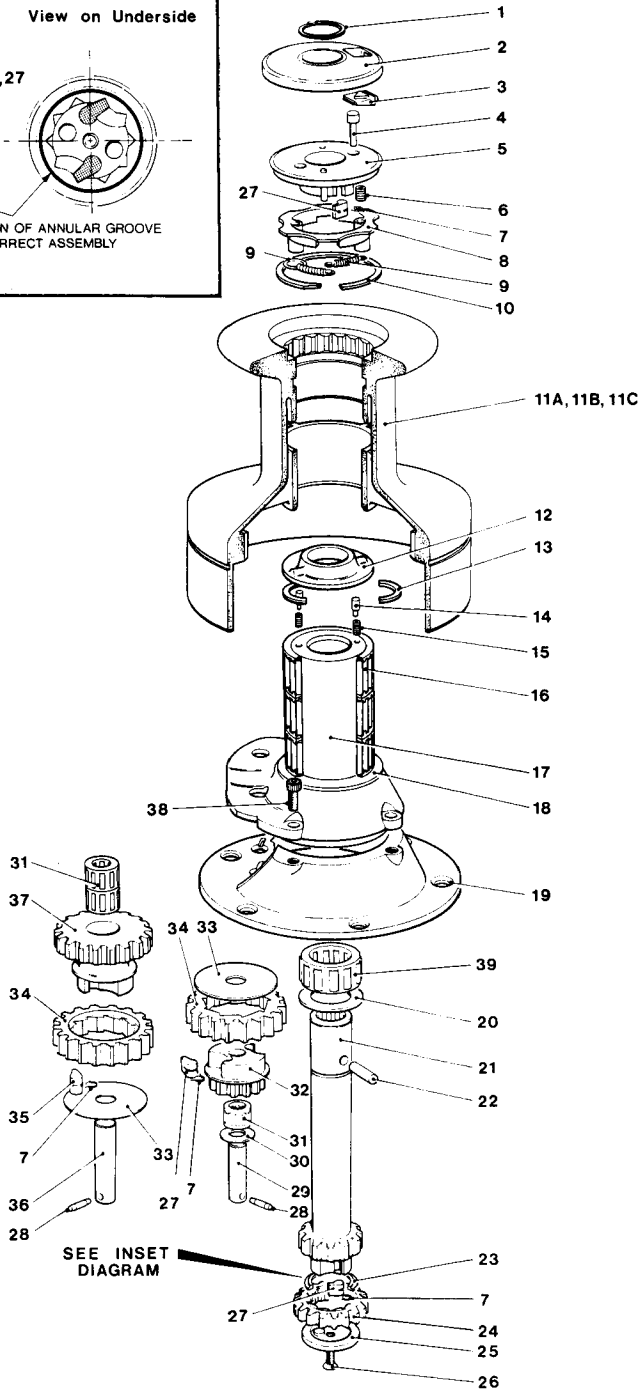
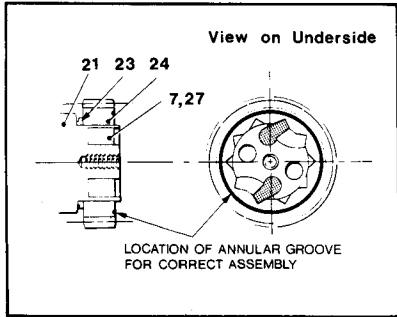


No.48



No. 48 3 Speed Winch

Item No.	Part No.	Description	No. Off
1	B2075	Circlip	1
2	15048106	Top Cap Cover	1
3	15044114	Push Button	1
4	15044111	Plunger	1
5	15044104	Top Cap Assembly	1
6	15044112	Spring	1
7	1260/7	Pawl Spring	8
8	15044106	Closing Ring	1
9	15044113	Spring	2
	15044115	Spring - Anchor Pin	2
10	B2083	Circlip	1
11A	15048102	Drum - Bronze	1
11B	15048202	Drum - Alloy	1
11C	15048302	Drum - St. Steel	1
12	15044105	Clutch Plate	1
13	15044118	Collet	2
14	15137203	Plunger	2
15	15137204	Spring	2
16	15044121	Roller Bearing	3
17	15000320	Centre Stem - Upper	1
18	15044116	Drum - Washer	1
19	15000014	Centre Stem - Lower	1
20	1300/21	Washer	1
21	15048103	Spindle	1
22	15044119	Drive Pin	1
23	15025107	Spacer	1
24	15000869	Ratchet Gear	1
25	15016107	Spindle End Gear	1
26	B0515	C'sk Screw - 1/4" UNC x 1/2" Long	1
27	1260/8	Pawl	4
28	B1516	Spirol Pin	2
29	15000016	Gear Spindle	1
30	1300/22	Washer	1
31	1300/SA2	Roller Bearing	3
32	1300/8	Pawl Gear	1
33	1264/7	Washer	2
34	1300/5	Ratchet Gear	2
35	1264/8	Pawl	4
36	15000015	Gear Spindle	1
37	1300/6	Pawl Gear	1
38	B0719	Skt. Hd. Cap Screw - 5/16" UNC x 3/4" Long	4
39	15000019	Bearing	1