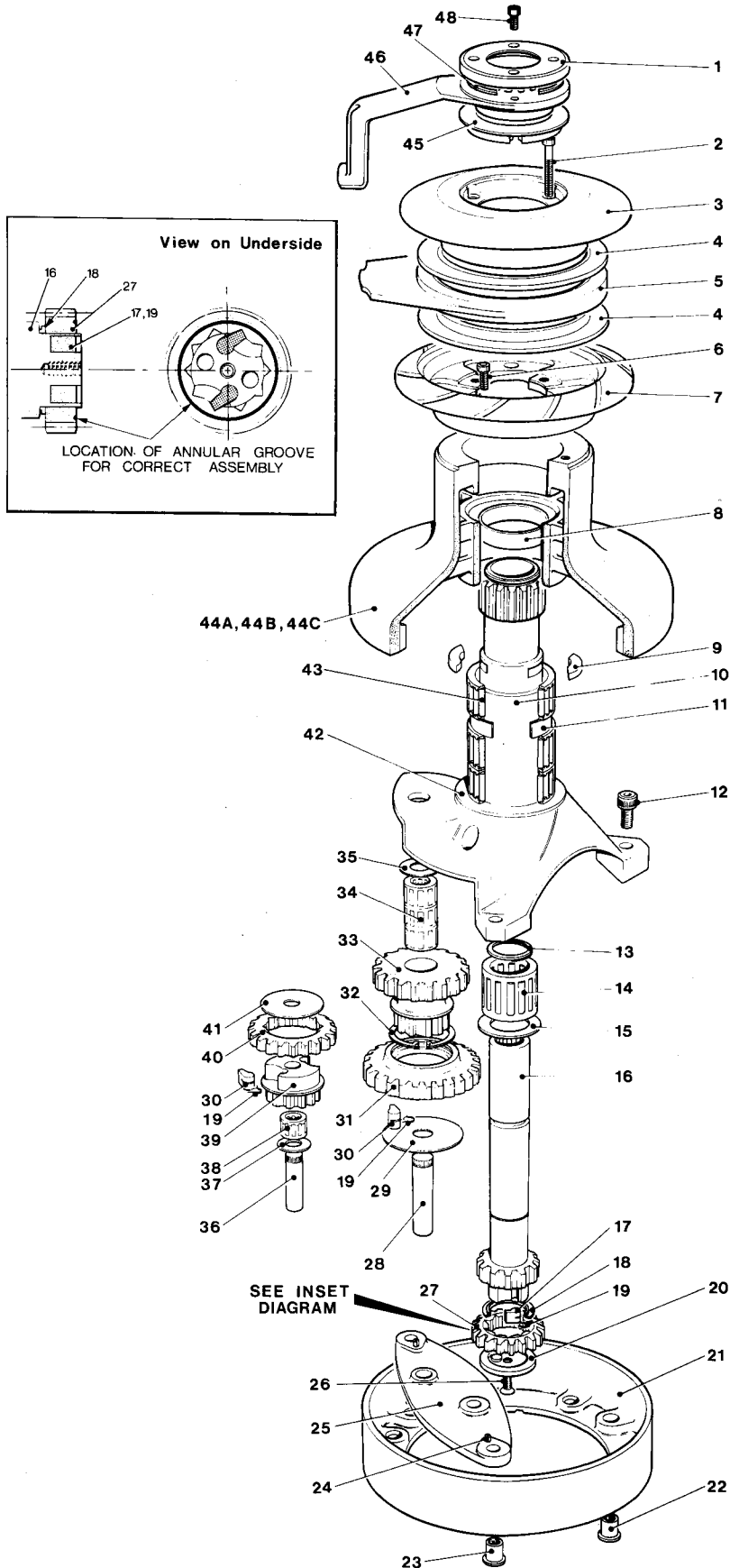


# No. 55ST



## No. 55 Self Tailing Winch

Item No.	Part No.	Description	No. Off
1	15044639	Top Cap	1
2	B 0731	Skt. Hd. Cap Screw - 1/4" UNC x 1 3/4" Long	3
3	15055644	Upper Crown Plate	1
4	15055641	Stripper Ring Insert	2
5	15055649	Stripper Ring	1
6	B 0709	Skt. Hd. Cap Screw - 1/4" UNC x 1/2" Long	3
7	15055645	Lower Crown Plate	1
8	15044638	Collar	1
9	15040605	Key	2
10	15055631	Centre Stem	1
	15055636	Centre Stem Extension	1
	15044614	Pin	1
11	15048105	Spacer	1
12	B 0714	Skt. Hd. Cap Screw - 3/8" UNC x 3/4" Long	3
13	B 2079	Circlip	1
14	1264/SA2	Roller Bearing	1
15	1300/21	Washer	1
16	15055603	Spindle	1
17	1260/8	Pawl	2
18	15025107	Spacer	1
19	1260/7	Pawl Spring	6
20	15016107	Spindle End Cap	1
21	15055204	Base	1
22	1301/22	Dowel	1
23	1301/17	Dowel	2
24	B 1506	Spirol Pin	2
25	15055105	Bridge Piece	1
26	B 0515	C'sk. Screw - 1/4" UNC x 1/2" Long	1
27	15048104	Ratchet Gear	1
28	1301/10	Gear Spindle	1
29	1301/11	Washer	1
30	1264/8	Pawl	4
31	1301/7	Pawl Gear	1
32	B 2077	Circlip	1
33	1301/6	Ratchet Gear	1
34	1301/SA2	Roller Bearing	3
35	1301/19	Washer	1
36	1264/6	Gear Spindle	1
37	1300/22	Washer	1
38	1300/SA2	Roller Bearing	1
39	1300/8	Pawl Gear	1
40	1300/7	Ratchet Gear	1
41	15055119	Washer	1
42	15044116	Drum Washer	1
43	15044121	Roller Bearing	3
44A	15000096	Drum - Bronze	1
44B	15055502	Drum - Alloy	1
44C	15055602	Drum - St. Steel	1
45	15044627	Flanged Bush	1
46	15055648	Stripper Arm	1
47	15044637	Split Collet	2
48	B 0733	Skt. Hd. Cap Screw - 1/4" UNC x 3/8" Long	4