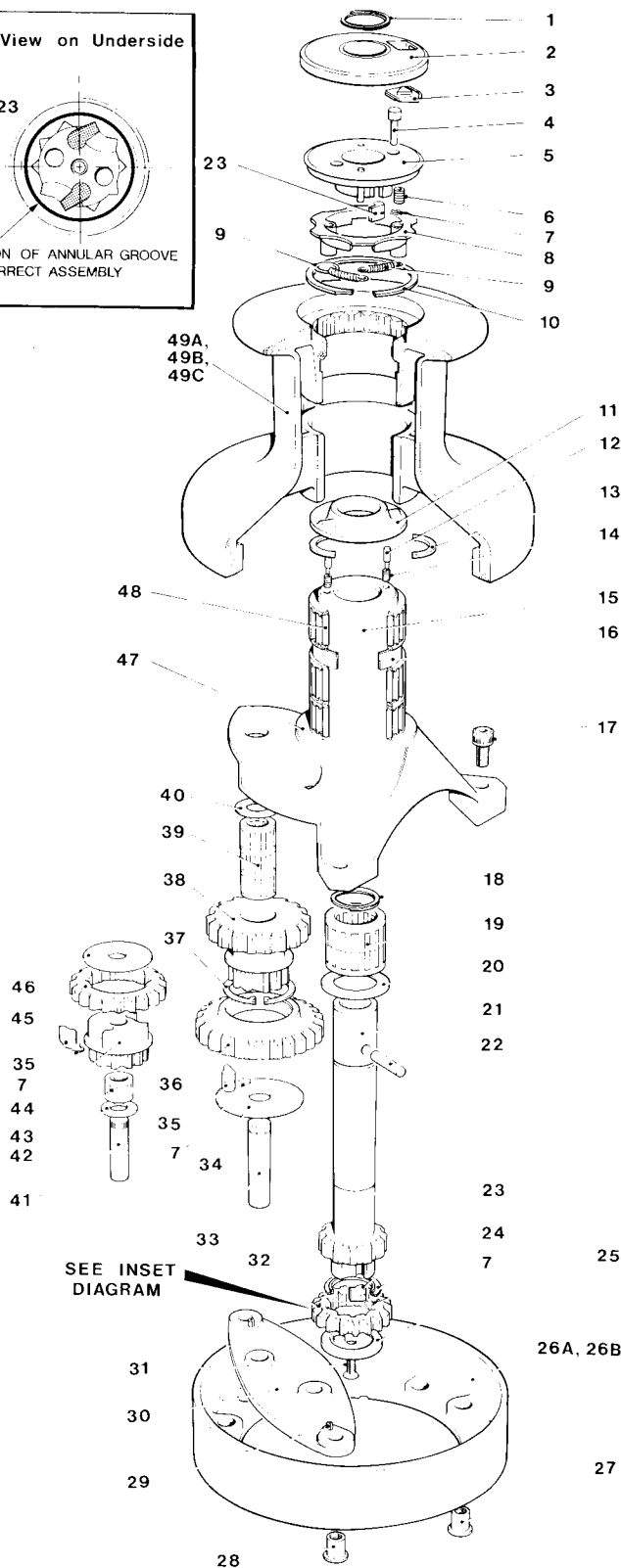
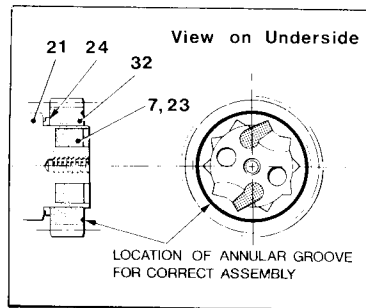


No. 55



No. 55 3 Speed Winch

Item No.	Part No.	Description	No. Off
1	B.2075	Circlip	1
2	15055106	Top Cap Cover	1
3	15044114	Push Button	1
4	15044111	Plunger	1
5	15044104	Top Cap Assembly	1
6	15044112	Spring	1
7	1260/7	Pawl Spring	8
8	15044106	Closing Ring	1
9	15044113	Spring	2
	15044115	Spring - Anchor Pin	2
10	B.2083	Circlip	1
11	15044105	Clutch Plate	1
12	15137203	Plunger	2
13	15044118	Collet	2
14	15137204	Spring	2
15	15055101	Centre Stem	1
16	15048105	Spacer	1
17	B.0714	Skt. Hd. Cap Screw - 3/8" UNC x 3/4" Long	3
18	B.2079	Circlip	1
19	1264/SA2	Roller Bearing	1
20	1300/21	Washer	1
21	15055103	Spindle	1
22	15044119	Drive Pin	1
23	1260/8	Pawl	4
24	15025107	Spacer	1
25	15016107	Spindle End Cap	1
26A	15055104	Base - Bronze	1
26B	15055204	Base - Alloy	1
27	1301/22	Dowel	1
28	1301/17	Dowel	2
29	B.1506	Spiral Pin	2
30	15055105	Bridge Piece	1
31	B.0515	C'sk Screw - 1/4" UNC x 1/2" Long	1
32	15048104	Ratchet Gear	1
33	1301/10	Gear Spindle	1
34	1301/11	Washer	1
35	1264/8	Pawl	4
36	1301/7	Pawl Gear	1
37	B.2077	Circlip	1
38	1301/6	Ratchet Gear	1
39	1301/SA2	Roller Bearing	3
40	1301/19	Washer	1
41	1264/6	Gear Spindle	1
42	1300/22	Washer	1
43	1300/SA2	Roller Bearing	1
44	1300/8	Pawl Gear	1
45	1300/7	Ratchet Gear	1
46	15055119	Washer	1
47	15044116	Drum Washer	1
48	15044121	Roller Bearing	3
49A	15055102	Drum - Bronze	1
49B	15055202	Drum - Alloy	1
49C	15055302	Drum - St. Steel	1