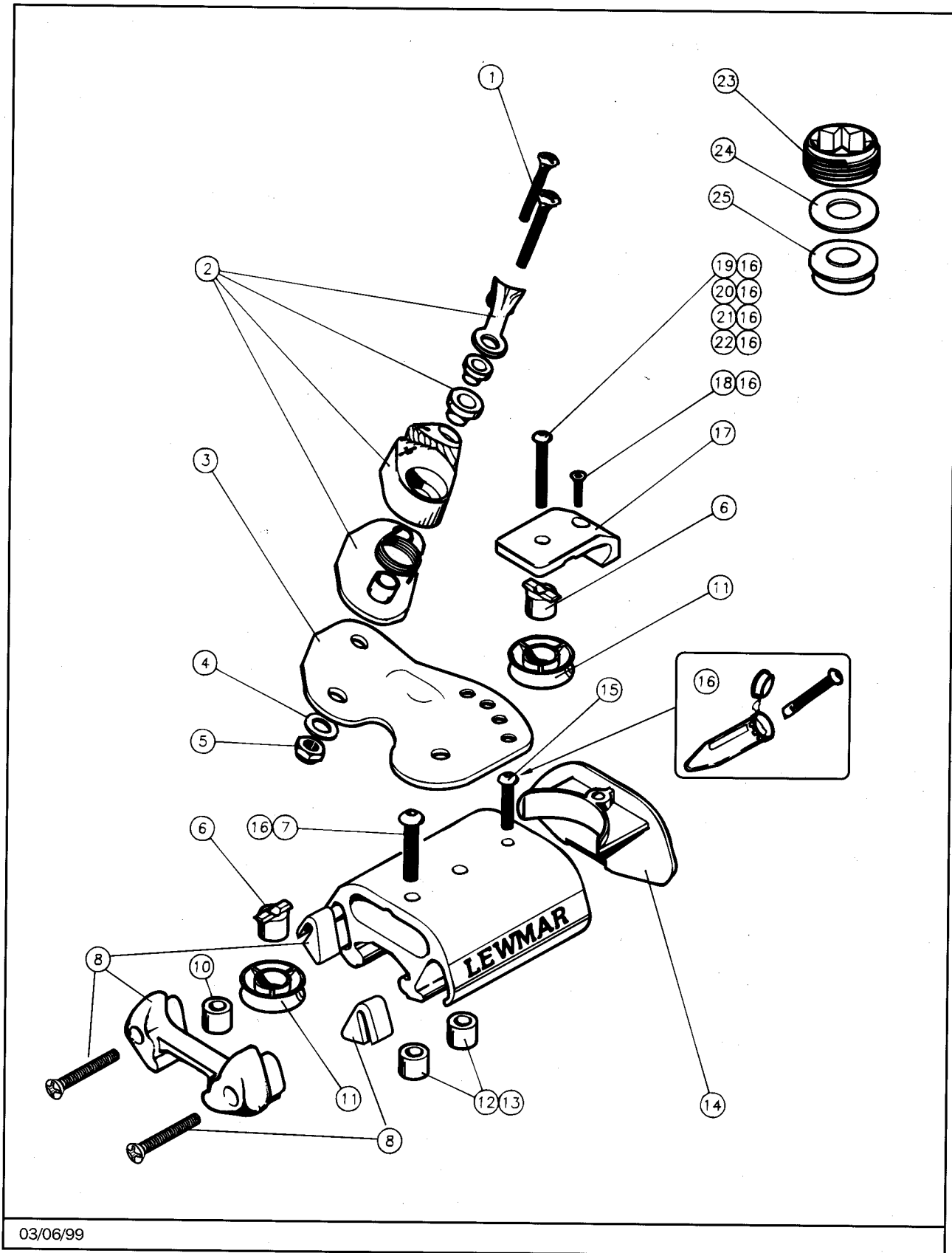


SIZE 1 END STOPS



03/06/99

LEWMAR®

SIZE 1 END STOPS

| Item | Description | Part Number | Assembly Number |
|-------------|---------------------------------------|--------------------|------------------------|
| 1 | Pozi Screw | B0326-A4 | |
| 2 | Cam Cleat Assembly | | B2830/Assy. |
| 3 | Cam Plate (Pair) | | 29171020 |
| 4 | Washer M5 | B1210-A4 | |
| 5 | Nyloc Nut M5 | B1078 | |
| 6 | Control Line Bearing | 25000010 | |
| 7 | Screw M6 x 30 | B4206 | |
| 8 | Rubber Buffer x 2 (Including Fixings) | | 29171046 |
| 10 | Sleeve (For Dead Eye) | B4304 | |
| 11 | Control Line Sheave | 25000009 | |
| 12 | Flat Track Insert | B4300 | |
| 13 | Beam Track Insert | B4312 | |
| 14 | End Stop Cover | 25000014 | |
| 15 | Screw M4 x 16 | B4200 | |
| 16 | Grease Vial | 28000810 | |
| 17 | Single Sheave Strap | 25000001 | |
| 18 | Screw M4 x 20 - Single Cam Car Ends | B4129 | |
| 19 | Screw M6 x 30 - Single Car | B4206 | |
| 20 | Screw M6 x 43 - Single Ends | B4211 | |
| 21 | Screw M6 x 33 - Single Cam Car | B4207 | |
| 22 | Screw M6 x 45 - Single Cam Ends | B4212 | |
| 23 | Friction Stop Adjuster | | 29171082 |
| 24 | Washer | | |
| 25 | Friction Pad | | |
| | Lewmar Label | 25000022 | |