

46.2st

Two Speed Self-Tailing Winch

HARKEN®

Winch Parts Installation Service

Required Tools

Screwdriver
Allen Wrench (6 mm)
Allen Wrench (5 mm for Self Tailing)
Plastic Head Hammer or Mallet
Small Knife
Brush
Rags
Solvent
Oil
Grease

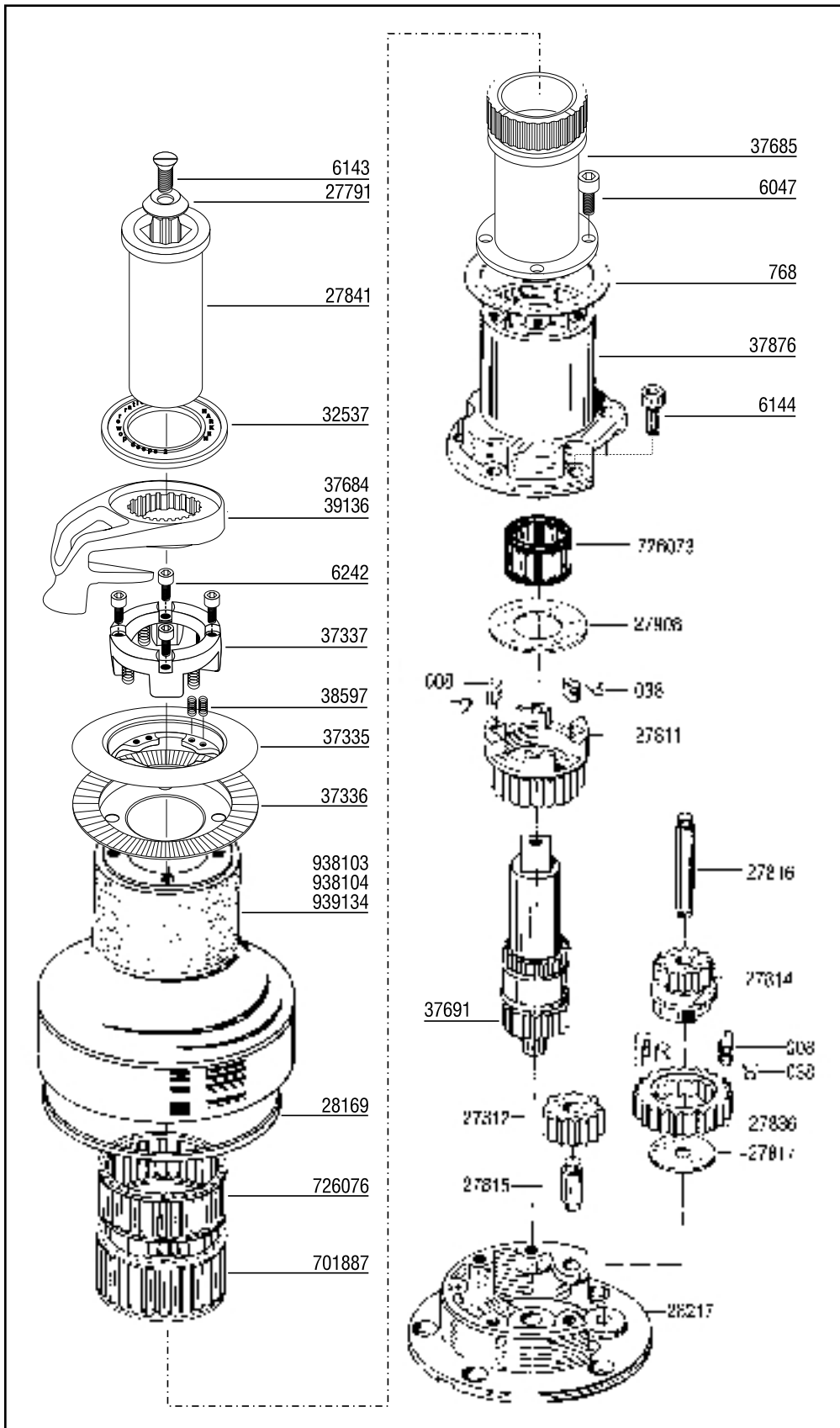
Parts List

008	Pawl
038	Pawl Spring
768	Thrust Washer
6047	Screw
6143	Top Screw
6144	Screw
6242	Screw
27791	Plastic Washer
27811	Pawl Gear
27812	Gear
27814	Pawl Gear
27815	Gear Shaft
27816	Gear Shaft
27817	Cover Plate
27836	Ratchet Gear
27841	Handle Socket
27908	Washer
28169	Red Line Ring
28217	Base
32537	Top Cap
37335	Upper Jaw
37336	Lower Jaw
37337	Springs Support
37684	Chrome Stripper Arm
37685	Stripper Arm Support
37691	Spindle
37876	Center Stem
38597	Spring
39136	Bronze Stripper Arm
701887	Bearing
726073	Bearing
726076	Bearing
938103	Aluminum Drum
938104	Chrome Drum
939134	Bronze Drum

Suggested Service Kits

BK4512	10	008 Pawls
	10	038 Springs
BK4513	100 ml	Grease

When ordering parts, please include a "B" before each number (i.e. B008).



Service winch before the sailing season begins and once during.

■ Installing Winch

Make sure mounting surface is flat.
Check sheet entry angle. Should be at least 8° (see drawing).
Open winch.
Position winch on deck with drive gear where sheet enters winch drum. Mark holes.
Remove winch and drill holes.
Mount using five (5) 1/4" (6 mm) flathead machine screws.
Apply bedding compound. Bolt winch to boat.
Clean excess bedding compound from base drain holes.
Lubricate and close winch.

■ Minimum/Maximum Line Diameter

Harken winches feature spring-loaded self-tailing jaws which adjust automatically to the following line sizes:

Minimum 5/16" (8 mm)
Maximum 1/2" (12 mm)

■ Positioning Stripper Arm

Loosen top screw.
Remove handle socket.
Lift stripper arm and position as desired.

■ Opening Winch

Remove top screw.
Lift off drum and stripper arm.

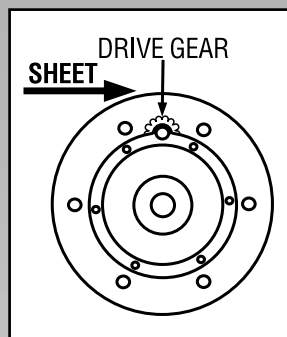
■ Servicing Winch

Remove pawls and springs - service as below.
Remove bearing, gear shaft and gears.
To reach interior shaft bearing, winch must be removed from deck.
Clean all parts except 37335, 37336 and 37337 with rag and solvent.
Important: Use freshwater only on parts 37335, 37336 and 37337.
Use brush to lubricate all moving parts lightly with grease.
Replace pawls and springs and lubricate lightly with oil.
Assemble and close winch.

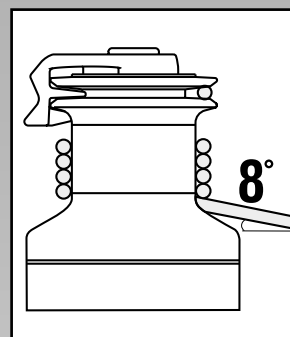
■ Servicing Pawls

Catch spring with knife and hold against pawl.
Lift out pawl.
Clean and check for wear.
Place spring against pawl with straight leg against pawl.
Hold spring closed and slip pawl into pawl socket.
Lubricate pawls using oil.

Mounting

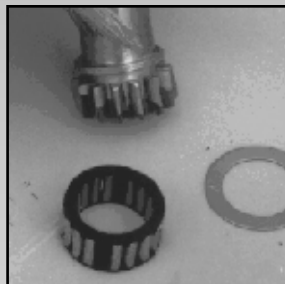


Position drive gear where sheet enters winch drum.

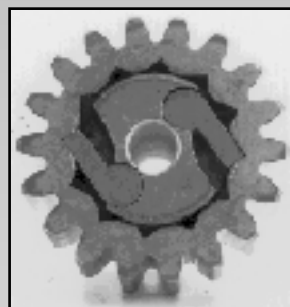


Sheet entry angle must be at least 8°.

Servicing Winch



Clean all parts, except 37335, 37336, and 37337, with solvent.

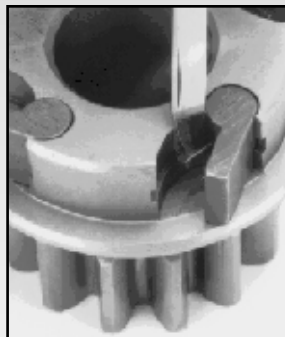


Use a brush to spread a light, even coat of grease.

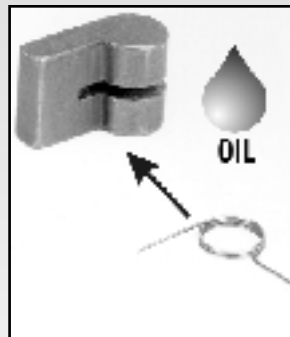


If ratchet gear is mounted backwards, winch will slip.

Servicing Pawls



Use knife to free captive spring.



Insert spring with straight leg against pawl. Use oil for lubrication.

4564/2-99

HARKEN

